



R290 mbask

Integrated Heat Pump Hot Water System



Find out more at www.greeac.com.au

KEY FEATURE



- **R290 Eco-friendly Refrigerant**

R290, a natural refrigerant with a GWP of 3, significantly cuts carbon emissions and avoids ozone depletion, offering an eco-friendly alternative to high-GWP refrigerants.

R290

- **Less Refrigerant Used**

Charge volume is reduced by **67%** compared with conventional refrigerant



Conventional refrigerant

R290

ENERGY-SAVING

• Compressor Dedicated for R290 Heat Pump

The compressor features a 40% more compact design, equipped with:

- A high-efficiency permanent-magnet motor
- V-shaped magnetic flux concentration technology
- Lightweight rotor construction
- Optimized low-torque-ripple design
- Additionally, the surface rigidity has been tripled through advanced adamas coating.

Compact compressor design
The volume is reduced by

40%↓



• Self-Adaptive Operation

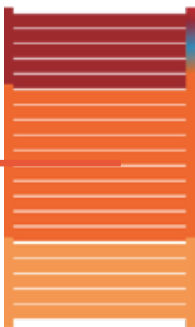
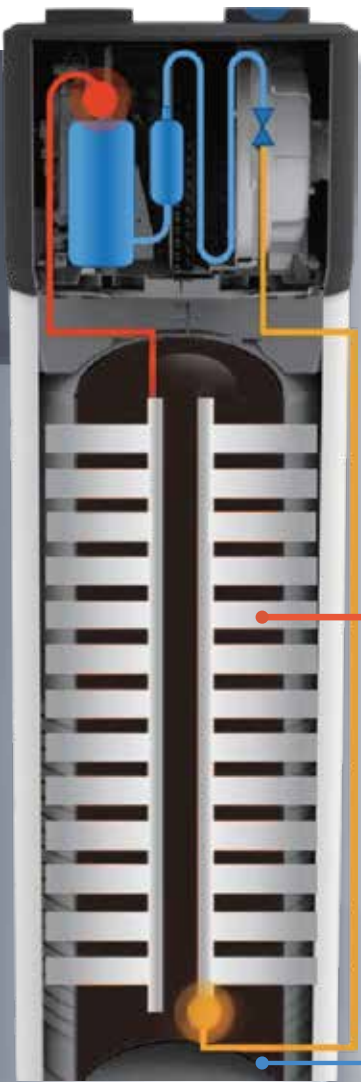
- Fast Heating
- Accurate Water Temperature
- Low noise

Automatically adjust the operating frequency of the compressor and the rotating speed of the fan motor according to the change of the water temperature

• Dedicated Micro-channel Heat Exchanger

It adopts the special design of channels which intensified the heat transfer effect in refrigerant process.

Comprehensive heat transfer performance is improved by **32%** when compared with conventional aluminum plate heat exchanger.



Superheat

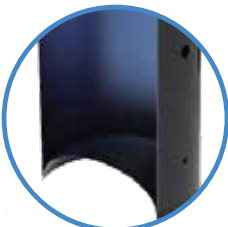
Gas-liquid phase

Subcooling



RECTANGULAR CHANNEL
Reduce flow resistance

SPECIAL CHANNEL
Enhanced subcooling



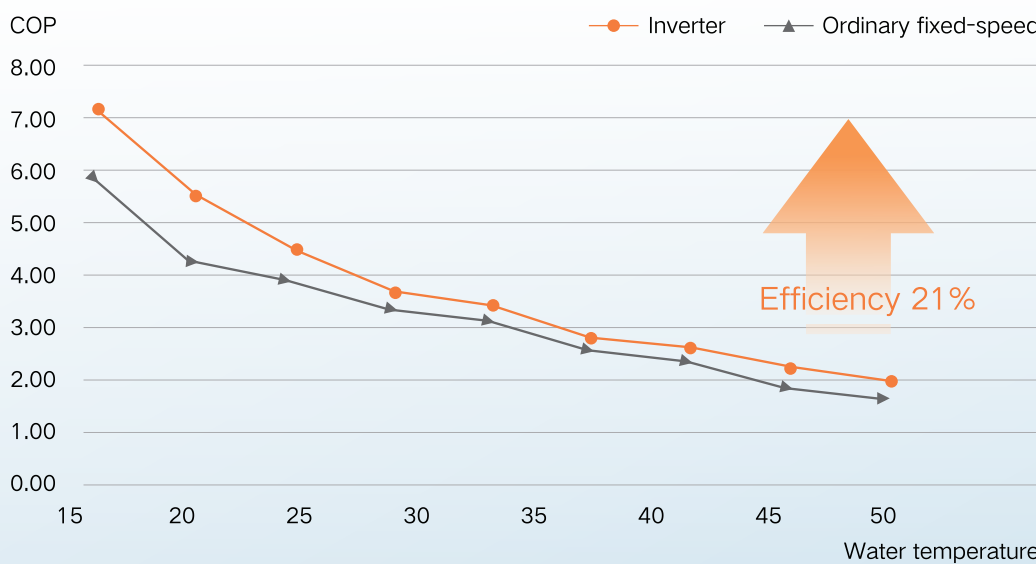
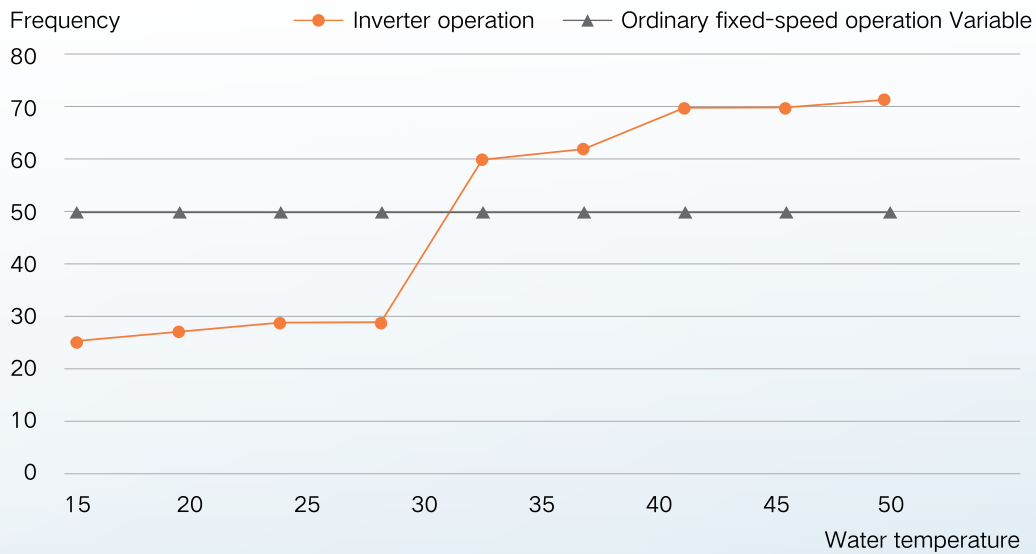
• Inner Convex Bottom Water Tank

The cold water at the bottom of the water tank is fully heated by the bottom subcooling heat exchange to obtain better energy saving and water usability.

Self-Adaptive Inverter Compressor

Realizing the optimal COP

Compared with the water heater adopting ordinary fixed-speed compressor, it is more energy-efficient.



Intelligent Energy-Saving

Thanks to self-learning and self-forecasting functions, the intelligent operation is more energy-saving.



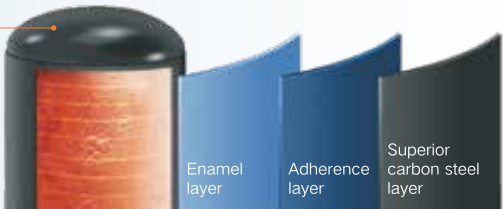
RELIABLE

• Crystal Titanium in Blue Enamel Tank

- Enamel layer, adherence layer and superior carbon steel layer.
- Three layers are more reliable for corrosion resistance, and more secure to use.

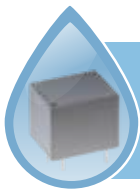
20 kg/cm²
High anti-pressure ability

1080h
Acid-resisting and anti-corrosion test



• Double Anti-explosion Design

- Anti-explosion design for potential ignition source
- Isolated design of electrical control and refrigerant pipeline



Relay
sealing device



Sealed electrical control parts



Thermostat
non-incendive component



Compressor and refrigerant pipeline components



• Refined Control of Refrigerant Flow

- Wide adjustment range, suitable for wider ambient temperature and water temperature
- Electronic adjustment with sensitive reaction

• Gree 4-way Reversing Valve for Defrosting

- Conduct defrosting automatically according to the thickness of frost in the evaporator
- Quick and thorough defrosting



CONVENIENT

Enjoy Convenient and Comfortable Life

- Easy Installation
- Smart Wired Control
- Intelligent App Control



MULTIPLE PROTECTIONS



Electric anode rod for preventing corrosion



Dry fire protection



Insulated water tank



Automatic temperature control



Grounding protection



Automatic error detection



Overpressure protection



Waterproof and anti-backflow protection



SPECS

• H Series

Model	GRS-2.3Pd/TD200ANpH-K	GRS-2.3Pd/TD270ANpH-K
Rated water storage capacity	206L	270L
Heat pump heating capacity	2300W	2300W
Heat pump rated input power	426W	426W
cop	5.41W/W	5.46W/W
Electric heater input power	2000W	2000W
Maximum input power (Heat pump + Electric heater)	830W+2000W	830W+2000W
Power supply	220-240V ~ 50Hz	220-240V ~ 50Hz
Water outlet temperature	35°C~70°C	35°C~70°C
Heat pump operating range	-7~45°C	-7~45°C
Inlet/Outlet connector diameter	DN15	DN15
Water-proof grade	IPX4	IPX4
Refrigerant	R290 (330g)	R290 (330g)
Sound pressure level	44dB(A)	44dB(A)
Dimension (W×D×H)	663mm×670mm×1643mm	663mm×670mm×1924mm
Net weight	97kg	109kg

• B Series

Model	GRS-2.3Pd/TD200ANpB-K	GRS-2.3Pd/TD270ANpB-K
Rated water storage capacity	206L	270L
Heat pump heating capacity	2300W	2300W
Heat pump rated input power	426W	426W
cop	5.41W/W	5.46W/W
Electric heater input power	2000W	2000W
Maximum input power (Heat pump + Electric heater)	830W+2000W	830W+2000W
Power supply	220-240V ~ 50Hz	220-240V ~ 50Hz
Water outlet temperature	35°C~70°C	35°C~70°C
Heat pump operating range	-7~45°C	-7~45°C
Inlet/Outlet connector diameter	DN15	DN15
Water-proof grade	IPX4	IPX4
Refrigerant	R290 (330g)	R290 (330g)
Sound pressure level	44dB(A)	44dB(A)
Dimension (W×D×H)	663mm×670mm×1643mm	663mm×670mm×1924mm
Net weight	97kg	109kg

NOTES:
Product conforms to AS 3498:2020 and AS/NZS 2712:2007.
Test conditions: Outdoor ambient temperature 20/15°C (DB/WB); Water temperature from 10°C up to 55°C.
Under BOOST Mode, electric heater helps to heat water.
Data is subject to change for contiual improvement without prior notice.

GO FOR HEAT PUMP WATER HEATER SUPPORTED BY GOVERNMENT INCENTIVES

- Federal Small-Scale Technology Certificate (STC's) entitlements for 2025**

When a heat pump water heater is purchased, as high as an amount of Small-scale Technology Certificates (STCs) will be received, and these STCs can be used to discount the purchase price.

STC 2025*

Effective from 1 Jan 2025 to 31 Dec 2025

Product Series	Product Model	Zone 1	Zone 2	Zone 3	Zone 4
H	200L	27	28	33	36
H	270L	28	28	34	37



- In addition to the Federal STC rebates , State rebates are also available in same states to replace water heating systems with efficient ones such as heat pump water heater**

01 The Victorian government provides VEECs to households in Victoria who are replacing eletric water heater with heat pump water heater, and to businesses in Victoria who are replacing gas/electric water heater or new installation with heat pump water heater.



Household Application

VEU 2025*

Effective from 1 Feb 2025 to 31 Jan 2026

State	Product Series	Activity	Zone 4 206L/270L Metropolitan	Zone 5 206L/270L Metropolitan	Zone 4 206L/270L Regional	Zone 5 206L/270L Regional
VIC	H	1D	13	13	14	14
VIC	H	3C	9/8	8	9/8	8
VIC	B	1D	12/11	12/11	13/12	12
VIC	B	3C	7	7/6	7	7/6

Business Application

VEU 2025*

Effective from 1 Feb 2025 to 31 Jan 2026

State	Product Series	Activity	Zone 4 206L/270L Metropolitan	Zone 5 206L/270L Metropolitan	Zone 4 206L/270L Regional	Zone 5 206L/270L Regional
VIC	B	44(i) Gas	22	19	20/19	17
VIC	B	44(ii) Electric	63/62	58/57	67/66	62/61
VIC	B	44(iii) New	18/17	15	16/15	13

02 The NSW Energy Savings Scheme (ESS) provides financial incentives to install heat pump water heater in NSW households for replacing electric water heater , and businesses for replacing gas/electric water heater or new installation.



Household
Application

ESS 2025*
Effective from 1 Jan 2025 to 31 Dec 2025

State	Product Series	Activity	Zone 3 206L/270L Metropolitan	Zone 5 206L/270L Metropolitan	Zone 3 206L/270L Regional	Zone 5 206L/270L Regional
NSW	H	D17	28	30	29	31
NSW	H	D19	14	15	14	15
NSW	B	D17	25	27	26	28
NSW	B	D19	11	12/11	11/10	12/11

Business
Application

ESS 2025*
Effective from 1 Jan 2025 to 31 Dec 2025

PRCs*

State	Product Series	Activity	Zone 3 206L/270L Metropolitan	Zone 5 206L/270L Metropolitan	Zone 3 206L/270L Regional	Zone 5 206L/270L Regional	Zone 3 206L/270L	Zone 5 206L/270L
NSW	B	F16 Gas	40/41	31	38	29	/	/
NSW	B	F16 Electric	137/135	115/113	141/139	119/117	/	/
NSW	B	F16 New	31/32	23	29	21	/	/
NSW	B	WH1	/	/	/	/	964/949	823/809

* Terms & conditions apply - contact us for more details

Welcome to visit/follow

Gree Global Platform



Gree Overseas



Gree Global



Gree Global



Gree Electric Appliances, Inc. of Zhuhai



Gree Global



Gree Global



Gree Global



globalgree.com



support.gree.com

Note:
Gree is committed to continuously improving its products to ensure the highest quality and reliability standards, and to meet local regulations and market requirements.
All features and specifications are subject to change without prior notice.
All images provided in this catalogue are used for illustration purposes only.
Copyright© Gree Electric Appliances, Inc. of Zhuhai. All rights reserved.

GC-2505-03

For Parts and Warranty:

**GREE**
AIR CONDITIONERS
greeac.com.au | hello@greeac.com.au

GREER290INTHWWHP-0625